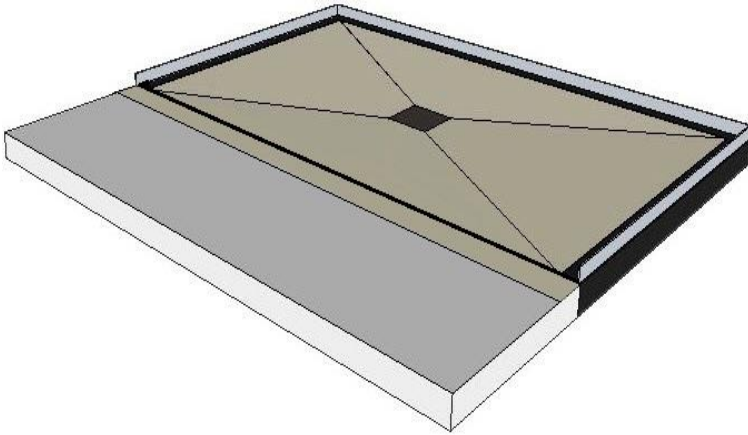




Tiled. Grouted. Finished. Embrace the Flow...

MURA-TILE SHOWER TRAY FLUSH-TO-FLOOR (INCLUDES ROLL-IN) SPECIFICATION



Construction & Features

- One piece construction, completely tiled & grouted, ready to install.
- Completely sealed on top, sides and bottom.
- Integral 1" flange on 3 sides to facilitate watertight connection with walls.
- Integral waterproof extension lip to facilitate watertight connection with floor.
- Center drain, bonded into tray.
- Tray thickness 2" to inset into floor.
- Weight: 40 - 70 lbs. (nominal, varies with tray size).

FINISH MATERIAL COMPONENTS	
Mosaic¹	TYPICAL: Marazzi / American Olean / Ragno / Daltile / Five Elements Unglazed porcelain, glazed porcelain, glazed ceramic or pebble
Grout²	TYPICAL: HB Fuller TEC Power Grout - Polymer modified, high performance grout
Drain³	Sioux Chief Shower Module Drain 828 Series - PVC body Circular or square stainless steel drain cover
1. Porcelain & ceramic mosaic meets or exceeds DCOF minimum requirements (≥ 0.42). 2. Grout exceeds ANSI A118.7. 3. Drain is in accordance with ASME A112.18.2-2005 / CSA B125.2-05.	

Installation

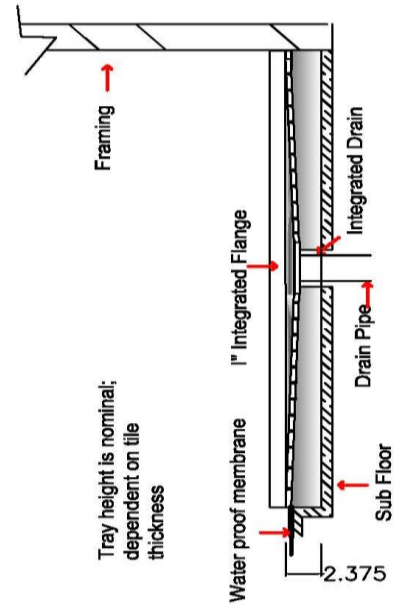
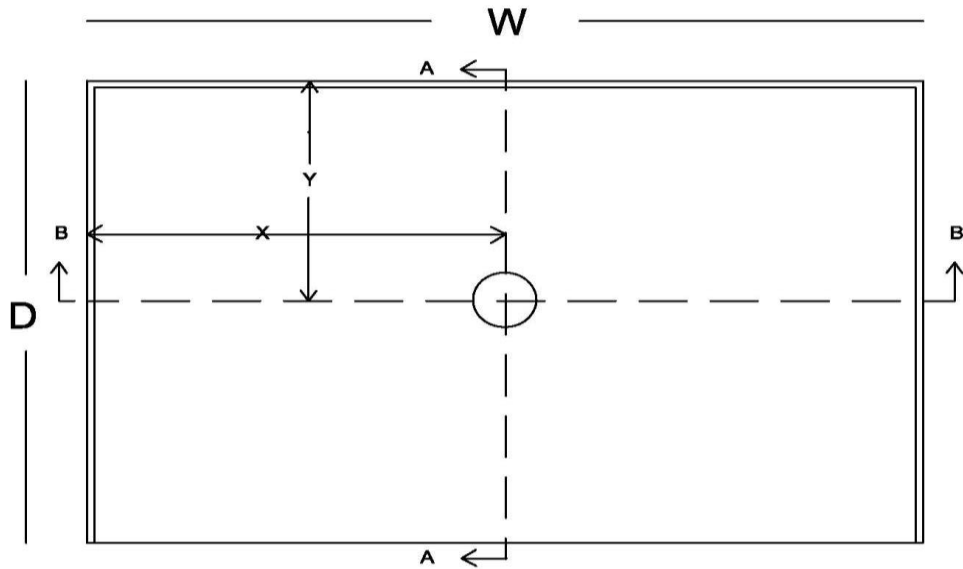
Complete instructions are delivered with product. Prior to receiving the Mura-Tile Tray, ensure that:

- A licensed plumber installs the drain pipe (min. height 1" above sub-floor) at the specified location (see next page). **Allow for +/- 1/2" movement of the pipe in all directions** (do NOT cement pipe into a completely fixed position).
- The sub-floor is checked in all directions to ensure it is evenly flat and level.
If the floor is not evenly flat and level it should be corrected prior to installation.

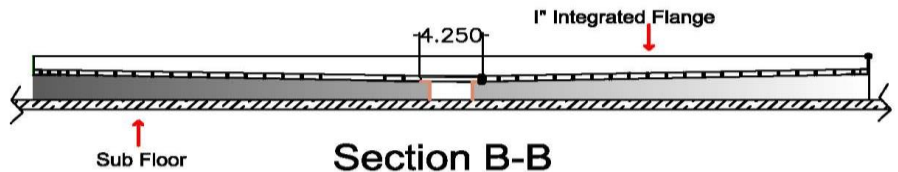
Mura-Tile Standard Models comply with the following standards & codes:

- IAPMO PS 106-2014
- International Residential Code (2015, 2012 and 2009)
- International Plumbing Code (2015, 2012 and 2009)
- Uniform Plumbing Code (2012 and 2009)

ICC-ES PMG Listing #: 1266

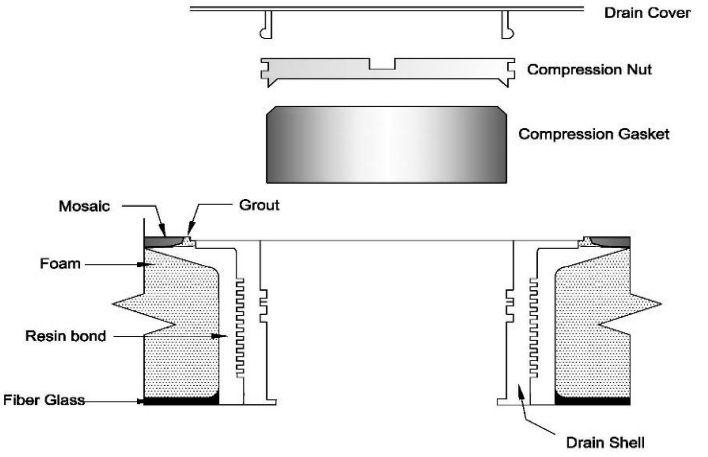


Section A-A



Section B-B

		Width (W), in			
		36	42	48	60
Depth (D), in	30				X = 30 Y = 15.75
	32			X = 24 Y = 16.75	X = 30 Y = 16.75
	34			X = 24 Y = 17.75	X = 30 Y = 17.75
	36	X = 18 Y = 18.75		X = 24 Y = 17.75	X = 30 Y = 18.75
	42		X = 21 Y = 21.75		



Drain Detail

Available Sizes & Drain Locations
Tolerances: W = -1/8" D = +/-1/16" X = -1/16"