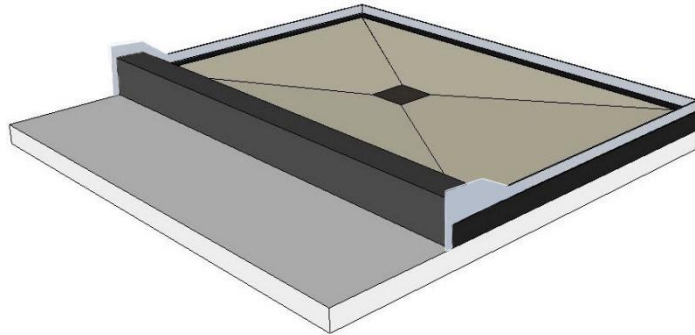




Tiled. Grouted. Finished. Embrace the Flow...

# MURA-TILE SHOWER TRAY w/CURB SPECIFICATION

## Construction & Features



- One piece construction, completely tiled & grouted, ready to install.
- Completely sealed on top, sides and bottom.
- Integral 1" flange on 3 sides to facilitate watertight connection with walls.
- Center drain, bonded into tray.
- Tray height extends nominal 2" above the floor.
- Curb height extends nominal 4" above the floor.
- Weight: 40 - 80 lbs. (nominal, varies with tray size).

## FINISH MATERIAL COMPONENTS

<b>Tile - Mosaic<sup>1</sup></b>	TYPICAL: Marazzi / American Olean / Ragno / Daltile / Five Elements Un glazed porcelain, glazed porcelain, glazed ceramic or pebble
<b>Tile - Curb Tile<sup>2</sup></b>	TYPICAL: Marazzi / American Olean / Ragno / Daltile Glazed porcelain or glazed ceramic
<b>Curb Edge Profile</b>	TYPICAL: Genotek / Schluter / Custom BP Round Edge Trim - Anodized aluminum or PVC
<b>Grout<sup>3</sup></b>	TYPICAL: HB Fuller TEC Power Grout - Polymer modified, high performance grout
<b>Drain<sup>4</sup></b>	Sioux Chief Shower Module Drain 828 Series - PVC body Circular or square stainless steel drain cover
1. Porcelain & ceramic mosaic meets or exceeds DCOF minimum requirements ( $\geq 0.42$ ). 2. Porcelain & ceramic tile is in accordance with ANSI A137.1. 3. Grout exceeds ANSI A118.7. 4. Drain is in accordance with ASME A112.18.2-2005 / CSA B125.2-05.	

## Installation

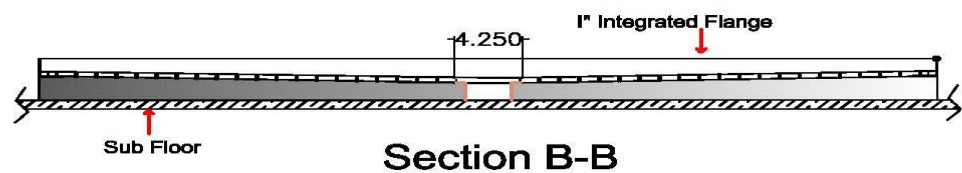
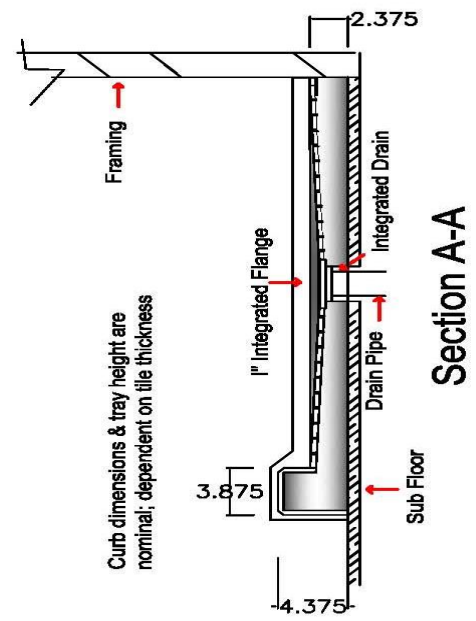
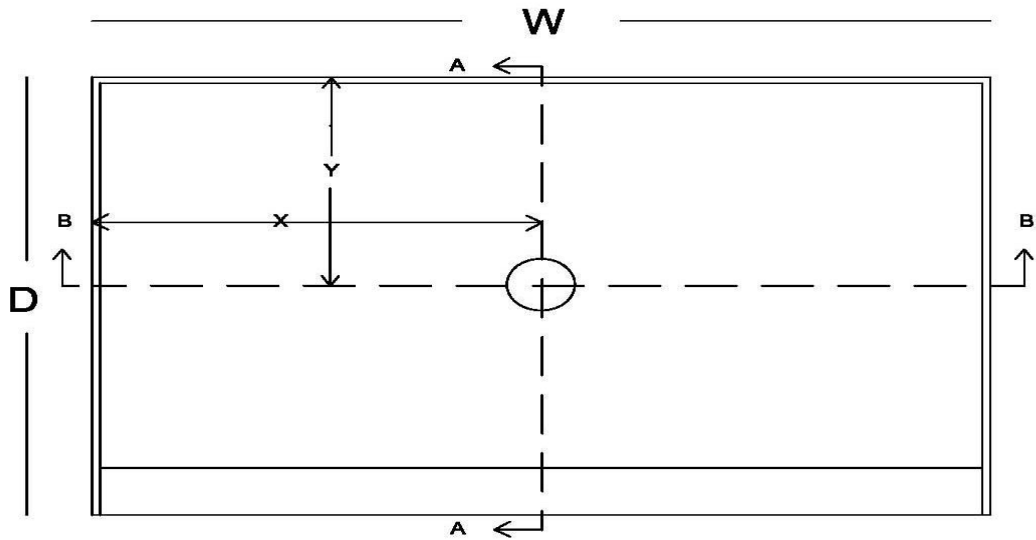
Complete instructions are delivered with product. Prior to receiving the Mura-Tile Tray, ensure that:

- A licensed plumber installs the drain pipe (min. height 1" above sub-floor) at the specified location (see next page). **Allow for +/- 1/2" movement of the pipe in all directions** (do NOT cement pipe into a completely fixed position).
- The sub-floor is checked in all directions to ensure it is evenly flat and level.  
**If the floor is not evenly flat and level it should be corrected prior to installation.**

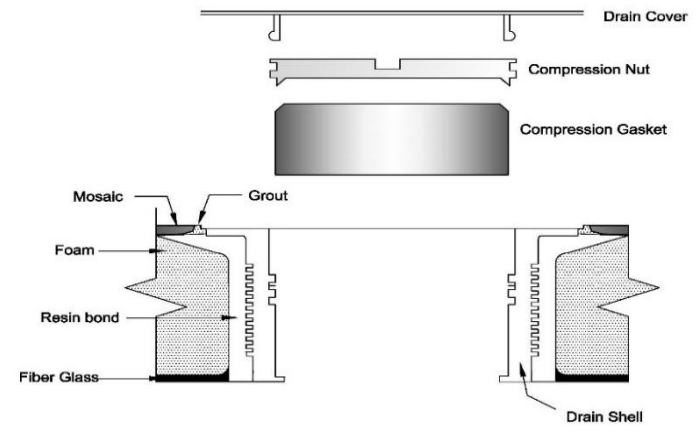
### Mura-Tile Standard Models comply with the following standards & codes:

- IAPMO PS 106-2014
- International Residential Code (2015, 2012 and 2009)
- International Plumbing Code (2015, 2012 and 2009)
- Uniform Plumbing Code (2012 and 2009)

**ICC-ES PMG Listing #: 1266**



		Width (W), in					
		36	42	48	60		
Depth (D), in	30					X = 30	Y = 14
	32			X = 24		X = 30	Y = 15
	34			X = 24		X = 30	Y = 16
	36	X = 18		X = 24		X = 30	Y = 17
	42		X = 21				Y = 20



**Available Sizes & Drain Locations**  
**Tolerances: W = -1/8" D = +tile thickness X = -1/16"**

**Drain Detail**